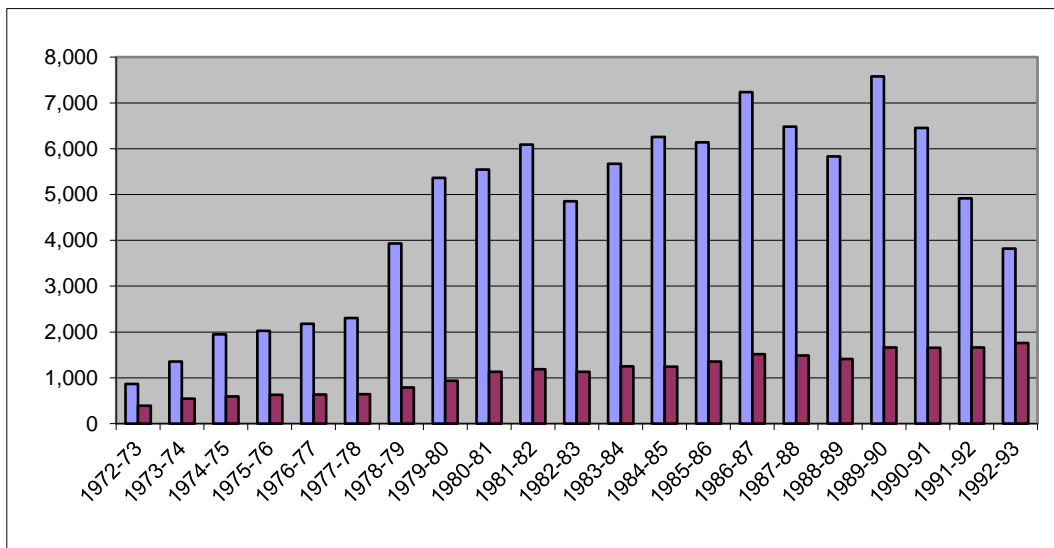


TABLE 3.2a
ANNUAL UNDUPLICATED HEADCOUNT AND FTES
FROM 1972-1973 to 1992-1993

	Headcount	FTES
1972-73	863	388
1973-74	1,352	543
1974-75	1,947	591
1975-76	2,026	629
1976-77	2,178	633
1977-78	2,302	642
1978-79	3,929	790
1979-80	5,366	935
1980-81	5,543	1,130
1981-82	6,089	1,189
1982-83	4,851	1,130
1983-84	5,672	1,247
1984-85	6,259	1,243
1985-86	6,139	1,352
1986-87	7,233	1,515
1987-88	6,481	1,485
1988-89	5,831	1,409
1989-90	7,579	1,659
1990-91	6,454	1,658
1991-92	4,914	1,659
1992-93	3,822	1,759

The first section of enrollment history illustrates a large growth period as well as an equally large decline in terms of headcount. The influx of mine retraining students in the 1980s increased headcount dramatically. The decline in headcount occurred when the training course shifted to non-credit status.

Figure 3.1

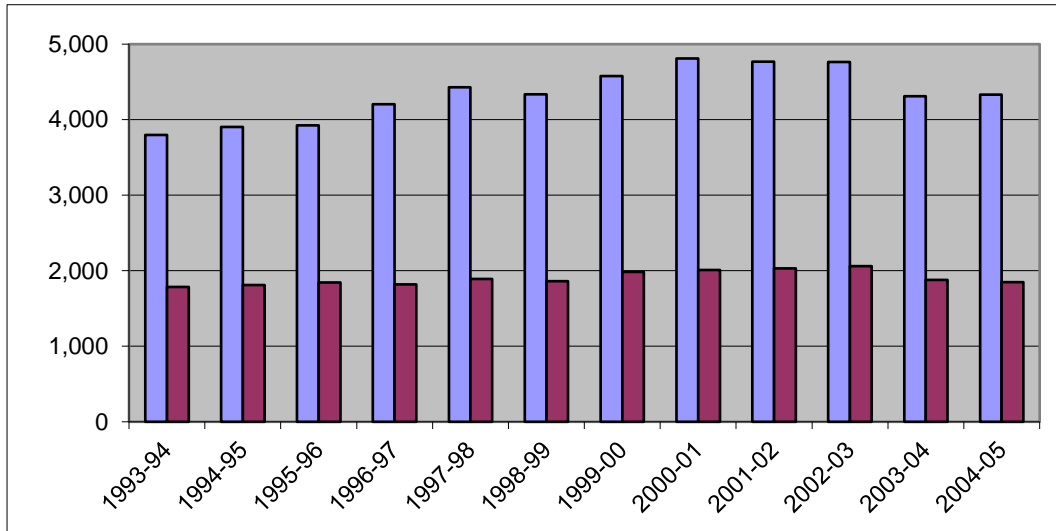


**TABLE 3.2b
ANNUAL UNDUPLICATED HEADCOUNT AND FTES
1993-1994 to 2004-05**

	Headcount	FTES
1993-94	3,798	1,785
1994-95	3,903	1,811
1995-96	3,926	1,845
1996-97	4,206	1,820
1997-98	4,429	1,890
1998-99	4,334	1,862
1999-00	4,578	1,986
2000-01	4,810	2,008
2001-02	4,769	2,031
2002-03	4,763	2,061
2003-04	4,310	1,878
2004-05	4,331	1,847

Since 1992-93, the trend for headcount and FTES had steadily increased through and peaked in the 2002-03 year, declining and stabilizing through 2008-09, averaging a headcount around 4,300 from 2003-04 to 2008-09. There were major increases in 2009-10 and 2010-11, though enrollments returned to the trend line, beginning in 2005-06, continuing with the 2011-12 year, though a recent downward trend has followed.

Figure 3.2



**TABLE 3.2c
ANNUAL UNDUPLICATED HEADCOUNT AND FTES
SINCE 2005-2006**

	Headcount	FTES
2005-06	4,227	1,843
2006-07	4,368	1,881
2007-08	4,312	1,918
2008-09	4,440	1,932
2009-10	4,507	2,136
2010-11	4,442	2,252
2011-12	4,429	2,104
2012-13	4,125	1,948
2013-14	3,834	1,862
2014-15	3,620	1,745
2015-16	3,671	1,784
2016-17	3,695	1,683
2017-18	3,560	1,619
2018-19	3,414	1,563

Figure 3.3

